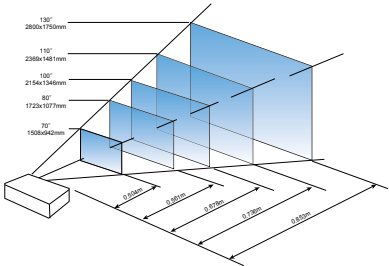


Spec.			
Model		UCW405Hi	UCWU365Hi
Optical Spec.			
Brightness		4000	3600
Display Technology		3LCD(HLD)	
Contract Ratio		50000:1	
Resolution		WXGA (1280x800)	WUXGA (1920 x 1200)
Lamp Source		Philips HLD + P2W	
Noise		Normal:37.5dB@1m / ECO:33.5dB@1m	
Lamp Lifetime		20,000 Hrs	
Display Panel		3x0.76"	3x0.76"
Aspect Ratio		16:10(Standard) / 4:3 (Compatible)	
Projection Lens			
Zoom/Focus		Manual	
Zoom Ratio		1.05xoptics	
Throw Ratio		80" @0.561m; 0.27~0.29 : 1	80" @0.561m; 0.27~0.29 : 1
F		F1.78-F1.83	
f		f= 4.92~5.18mm	
Screen Size		70"~130"	
Lens Shift V		±3%(Manual)	
Lens Shift H		±2%(Manual)	
Generic Spec.			
Speaker		2*10W	
Scranning Frequency		Hsync Frequency 15~100KHz / Vsync Frequency 48~85Hz	
Computer Signal Input		PC, VGA, SVGA, XGA, SXGA, WXGA, UXGA, WUXGA, Mac	
Videp Compatibility		PAL, SECAM, NTSC 4.43, PAL-M, PAL-N, 480i, 480p, 576i, 576p, 720p, 1080p and 1080i	
Power Requirements		100~240V @ 50/60Hz	
Power Consumption		420W(ECO: <0.5W)	
ECO Standby Mode		<0.5W	
Network standby		<3W	
Keystone Correction		V: ±5°(auto+manual) , H : ±5°(manual) Pincushion/Barrel Correction , Corner Keystone	V: ±5°(auto+manual), H : ±5°(manual), Corner Keystone
OSD(Languages)		26 languages: English, German, French, Italian, Spanish, Polish, Swedish, Dutch ,Portugese, Japanese, Simplified Chinese, Traditional Chinese, Korea, Russian, Arabic, Turkish, Finnish, Norwegian, Danish, Indonesian, Hungarian, Czech, Kazak,Vietnamese,Thai, Farsi	
Input Terminals		VGA x2, Audio in(mini jack, 3.5m) x1, YCbCr/Component x1(share with VGA in 2), Video x1, Audio in(L/R)-RCA x2, S-Video x1(share with VGA in 2), HDMI x2(one is compatible with MHL), USB-A x1(Support Memeory viewer), USB-B x1(Display), RJ 45 x1,	
Output Terminals		VGA x1, Audio out (mini-jack,3.5mm) x1	
Other Terminals		RS-232x1, RJ45 x1(control), USB-Bx1(for up-grade), Mini-USB(for interactive funciton), Micro-USB(for finger touch(optional))	
Interactive Function Spec.			
Interactive way		IR Pen Interactive / Finger Touch(Optional)	
Calibration		Auto Calibration / Manual (9 points)	
Multi-touch		10 points	
Working Projection Image Size		75" ~ 100"	
Display Mode		Support Ceiling mode & Desk top	
System Requirements		Windows	Windows 7 (32bit/64bit)/Windows 8/ Windows 10(Must be installed. NET Framework 4.0)
	Mac		
Detect Fromw Rate		100 fps	
Power Consumption		300mA(Max)	
Mechanical Spec.			
Power Supply		AC 100 – 240 V ~ 50-60 Hz	
Net. Weight(KG)		9.89 kg	
Max Dimensions( WxHxD mm)		449(W) x 425(D) x 153(H) mm	
Standard Accessories			
Standard		Power cord, VGA cable, Remote control, Service Card, CD(User's Manual & Interactive Function Driver), Quick Start Guide(for projector), Installation Guide(for interactive function), Light Pen (or Pointer)	
Optional		Optional Touch Curtain(OT615)-for finger touch function	

\*specifications subject to change without notice.

Peojection distance

Model	Screen Size	16:10	
		Wide	Tel
UCW405Hi UCWU365Hi	70"	0.504m	0.525m
	80"	0.561m	0.586m
	100"	0.678m	0.708m
	110"	0.736m	0.770m
	130"	0.853m	0.892m



Appearance



BOXLIGHT-Asia office

http://www.boxlight-asia.com  
Email: sales@boxlight-asia.com  
TEL: +886 3-6667350 / FAX: +886 3-5780432



Ultra Short Throw Interactive Projector

UCW405Hi / UCWU365Hi

LCD HLD light source. Vivid Color Performance. High Brightness. Ultra Shrow Throw Distance.

- Powerful correction function
- Latest IRIS technology
- Len Shift Function
- 3LCD color balance
- Speaker with 10W\*2
- Up to 20,000 hrs lamp life time
- Available display via USB or RJ45 cable
- 360 ° projection technongy
- Plentiful and practical projector display modes
- Interactive function





# Ultra Short Throw Interactive Projector

UCW405Hi  
UCWU365Hi

## HLD LED Light Source / Brightness: 3600lm(WUXGA) & 4000lm(WXGA).

The projector with new generation light source, HLD(High Lumen Density) LED ColorSpark, provide the real color of LED light source. Show a clear, bright, natural images to you during the business presentation. Provide the users a particularly prominent experience.



Current LCD



HLD LED



Laser

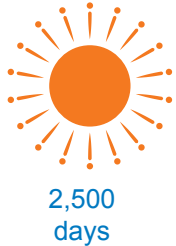
## 20,000 hours lamp life time, allowing the customer user-friendly feeling.

HLD LCD light source provide 20,000 hours lamp life. it don't need replace the lamp up to 6 years. it's reduce the consumable and maintenance. The Lamp without Hg and environmentally friendly for earth.



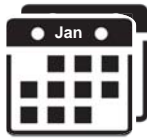
20,000  
hours

=



2,500  
days  
(\*1 day for 8 hours)

=



6.8  
years

## Rigid dustproof design.

High efficiency HEPA electrostatic dust filter can effectively extend the projector life to ensure the image quality.

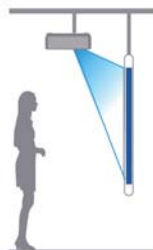
Projector built-in auto-detected system, it will checks the projector's air volume, and automatically detects whether the filter is blocked. It can actively give the alarm to clean up the filter message to protect the machine and improve the service life.

## Multi-projection way: support 360° projection in Vertical.

The projector supports the following project ways: Front, Rear, Ceiling / Front, Ceiling / Rear, Auto ceiling / Front , Auto ceiling / Rear and support 360° projection.



Ceiling Rear



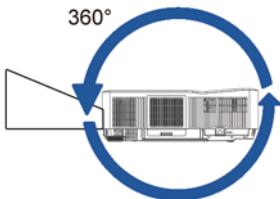
Ceiling Front



Rear

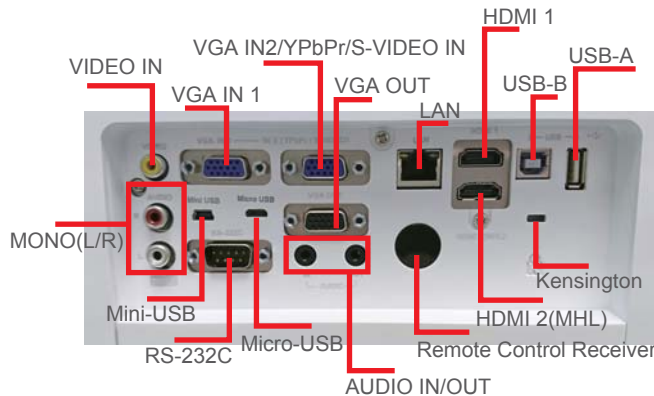


Front



## Plentiful interface, more expanded display interface: RJ45 & USB.

Not only the mainstream interface but also LAN & USB terminals can project any kind of signals. USB slot can support data reading such as jpeg or pdf.



## Powerful correction function.

Having the convenient manual and automatic Vertical correction, and manual Horizontal correction function. Moreover, user can use Corner Keystone, Pincushion/Barrel Correction\* to adjust the projected picture. Ensure user can project in any uneven surface. \*only for UCW405H.



Vertical



Horizontal



Corner



Pincushion



Barrel

## Select color modes by customer demand.

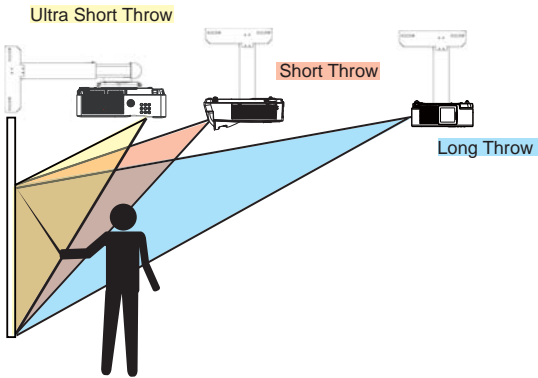
Dynamic, standard, cinema, blackboard, colorboard or you can decide by yourself, whether in bright or blackboard, white wall environment can be adjusted to the most suitable screen color performances to enjoy the real wonderful screen.

## Double password lock and anti-theft function.

User's power-on password protection and keyboard or remote control lock function can avoid the projector error operation and theft. In addition, the projector is equipped with Kensington anti-theft lock slot abd prevent the projector being stolen.

## Ultra Short Throw Distance

Ultra Short Throw Projector make a shortest distance for installtion. Avoid the light to the eye straight. Throw Ratio: 80" @ 56cm.



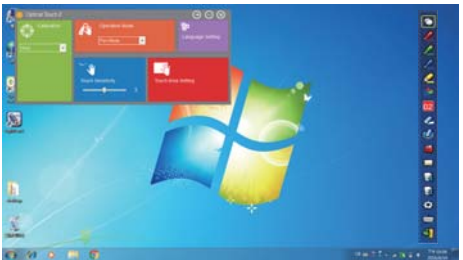
## Equipped with 10W\*2 speaker

Build in 20W speaker make the picture and sound show with same equipment. Reduce other installation for sound.



## Interactive Function: Make easy to use projector.

Connect to PC. It can install the software to Windows or Mac.You can use the Light Pen like the mouse to control your PC.The LightPen software provide useful toolbar, such as Ren pen, Drawing tool- to draw shape, Eraser- clean the mark, Save file- capture the current screen, White Board- chang other desktop. For more toolbar function please refer to the user's manual.



## Finger Touch Curtian: Using finger or dummy pen touch the projector screen. \*Options

Using with Optical Touch Curtian(OT615). You can control the projection screen by any pen or finger. It makes more easy and convenience to use with the projector.

